

### Features

- Low Loss
- High Rejection
- Low Ripple

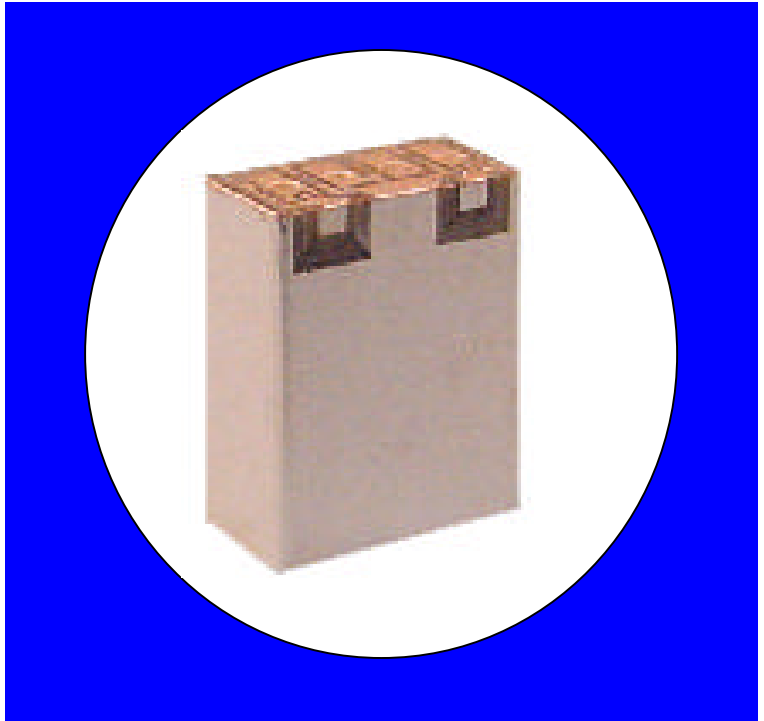
### Description

Surface mount, silver (Ag) coated ceramic filter. Developed for use in 800 MHz Infrastructure Applications.

Weight: 1.27 grams typical

Material: Filter is composed of a ceramic block plated with Ag.

Filter complies with RoHS standards.



### Electrical Specifications

Parameter	Frequency (MHz)	Typical @ 25°C	Spec. over -40°C to +85°C
<b>Electrical Response</b>			
Passband Insertion Loss	824 - 849	2.1dB	2.6 dB max
Passband Return Loss @ Port 1	824 - 849	12.0 dB	10.0 dB min
Passband Return Loss @ Port 2	824 - 849	12.0 dB	10.0 dB min
Passband Ripple	824 - 849	0.7 dB	1.5 dB max
Attenuation:	686.5	38.0 dB	35.0 dB min
	804	34.0 dB	12.0 dB min
	869 - 894	24.0 dB	20.0 dB min

Note: Supplier shall test each filter to the critical electrical specifications of the above table. Any subsequent audits may deviate from in value due to measurement repeatability among different test systems. Such deviations shall not exceed the following limits:

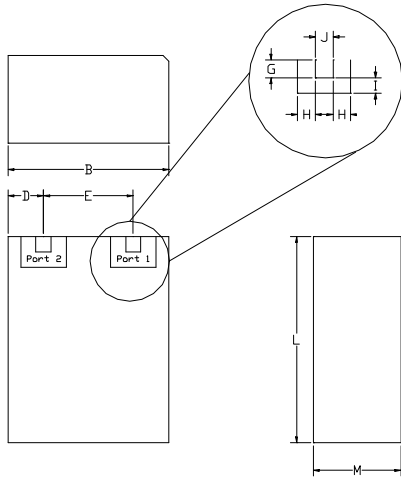
Specification Allowance	
Insertion Loss	0.1 dB
Return Loss	1.0 dB
Stopbands	1.0 dB

\*This product is covered by one or more of the following U.S. and foreign patents including: US 4,692,726;US 4,742,562; US 4,800,348;US 4,829,274;US 5,146,193;EP 0573597;DE 0573597;FR 0573597;JP 508149/92;KR 142171;US 5,162,760;US 5,218,329;US 5,250,916;US 5,327,109;US 5,488,335;CA 2114029;FR 9306297;GB 2273393;JP 3205337;KR 115113;CN 93106228.4;US 5,512,866;EP 0706719;DE 0706719;FR 0706719;GB 0706719;CN 95190359.4;US 5,602,518;US 5,721,520;US 5,745,018;EP 0910875;DE 0910875;DK 0910875;FR 0910875;GB 0910875;IE 0910875;JP 505182/98;KR 10-323013;US 5,994,978;US 6,462,629;CN 00810420.4;US 6,559,735;US 6,650,202;US 6,834,429.Other US and foreign patents pending.

\*CTS Corporation 2006 reserves all copyrights in the layout, design and configuration of the patterns on this product.\*

### Mechanical Drawing

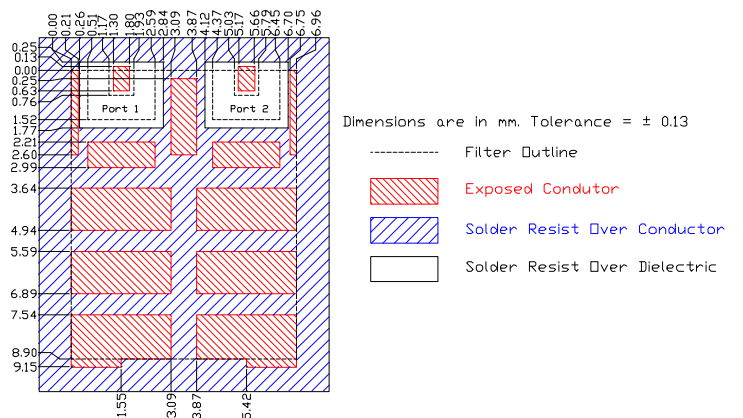
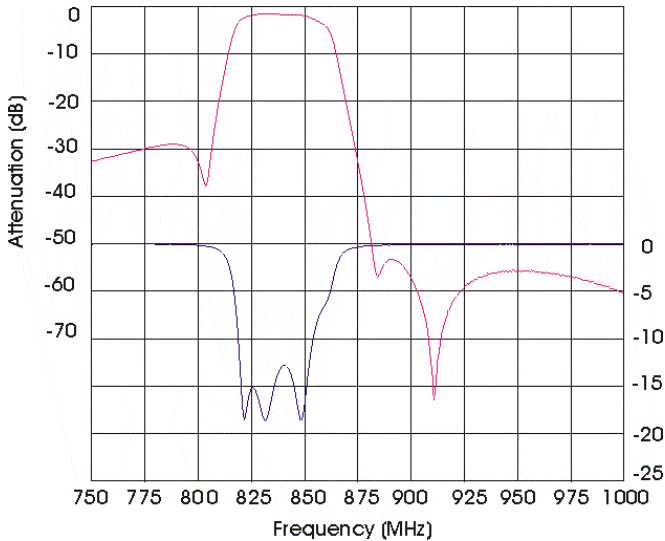
Rev 1 – Origin Date: July 11, 2005 – Revision Date: August 11, 2006



Dim	Nominal (mm)	Tolerance (mm) +/- or max
A		
B	7.05	max
C		
D	1.55	0.25
E	3.86	0.13
F		
G	0.76	0.13
H	0.66	0.13
I	0.76	0.13
J	0.76	0.13
K		
L	9.1	max
M	3.93	max

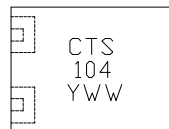
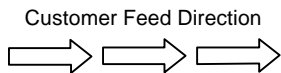
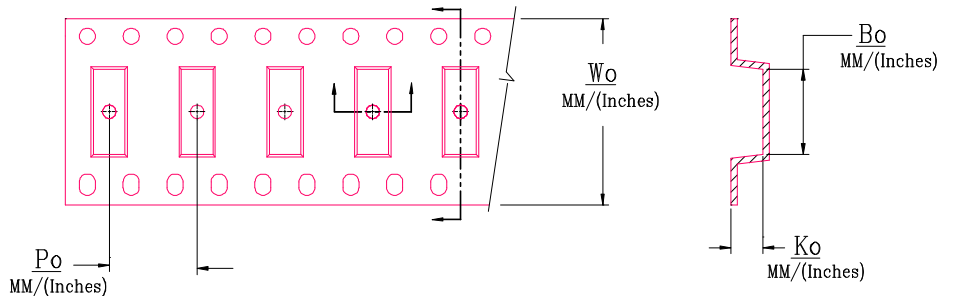
### Electrical response

### PCB Layout



### Packaging and Marking

REEL DIAMETER	mm	330
REEL WEIGHT	kg	0.346
REEL QUANTITY	ea.	500



MODEL NO.	$W_o$	$A_o$	$B_o$	$K_o$	$P_o$
CER0104	0.945/24.0	0.366/9.30	0.291/7.40	0.176/4.47	0.630/16.0