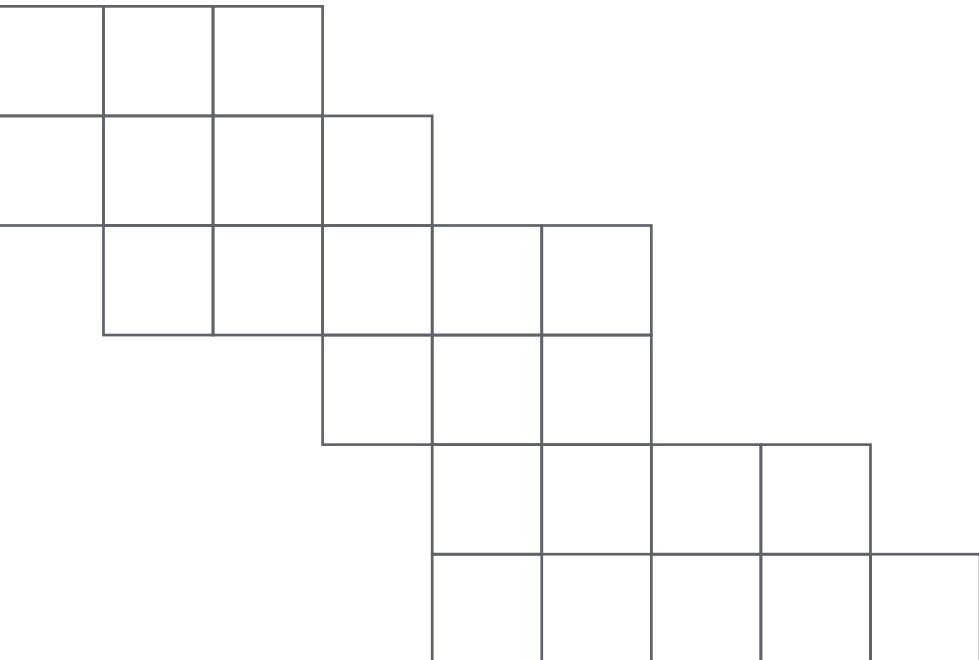


Your Partner in
Smart Solutions



Overview

Business

CTS is a leading designer and manufacturer of sensors, actuators and electronic components.

Headquarters

Lisle, Illinois - USA

Locations

12 manufacturing locations in North America, Asia and Europe.

Founded

1896

Ticker

CTS (NYSE)

Number of Employees

~3,000 Globally

Over 120 Years of Innovation

CTS was founded in 1896 to meet the demands of the early telephone industry. Initially named Chicago Telephone Supply, CTS evolved from being one of the first manufacturers of telephones to designing and manufacturing a diverse portfolio of products for a variety of industries.

Today, CTS provides sensors, actuators and electronic components to the transportation, industrial, information technology, defense, aerospace, medical and communications markets.

CTS has been a part of the future for over 120 years. As technology has continued to move forward, we've been right alongside, engineering intelligent ways to meet people's ever changing needs.

Our Vision

We aim to be a leading provider of **sensing** and **motion** devices as well as **connectivity** components, enabling an intelligent and seamless world.

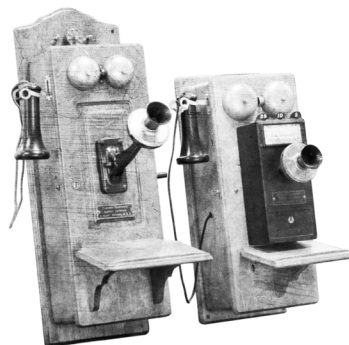
Sense. Connect. Move.

Our Promise

Your Partner in Smart Solutions

This is the idea at the heart of our company. It transcends what we do and gives us a platform to be not only a manufacturer, but also a partner. This is our rallying cry that connects our attitude with our approach.

Our History



Chicago Telephone Supply Company established, later to become known as "CTS."

Founded

1896



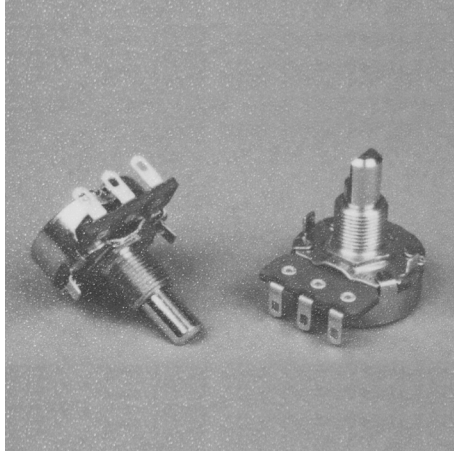
Adapted radio technology to the emerging television market.

Adapted to Evolving Television Market

1922

Became a Supplier of Components

Evolved from a Manufacturer of finished products (telephones and switchboards) to a major supplier of radio receiver components.



1950

Listed on NYSE

CTS became publicly traded on the New York Stock Exchange.



1962



Established plants in Taiwan and Mexico to increase cost efficiency and penetrate international markets.

Globalized Business

1967

Responded to Emissions Trends

Developed custom under-the-hood and chassis position sensor business for evolving automotive requirements.



1980



Refined strategy to focus on sensors, actuators and electronic components. Sold EMS business.

Refined Strategy

2013

Renewed Identity

Released new identity with renewed focus on a unified Vision, Promise and Value Proposition.

2016



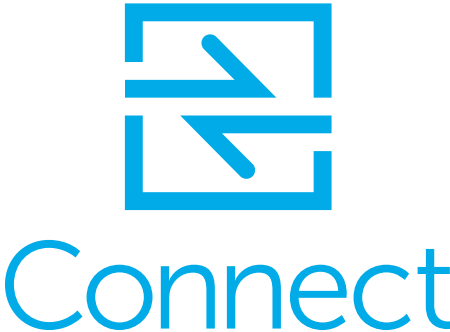
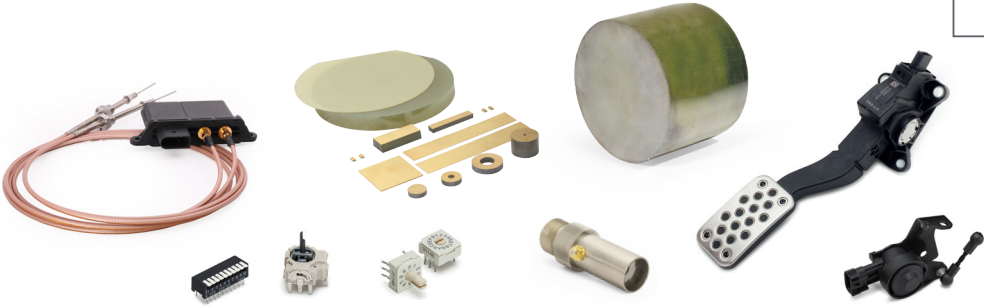
Our Value Proposition

CTS aims to be at the forefront of technology, delivering innovative sensing, connectivity and motion solutions to enable an intelligent and seamless world.



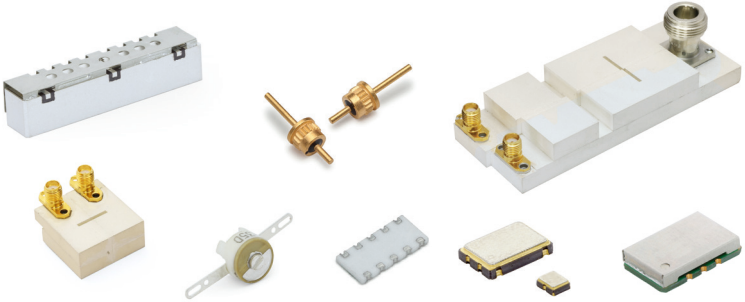
Whether for one-time, multiple events or over their lifetime, our sensing and control products provide vital inputs into electronic systems.

- Controls
- Pedals
- Piezoelectric Products
- Sensors
- Switches
- Transducers



Our connectivity components enable electronic systems to talk to each other in the same language and in synchronization.

- EMI/RFI Filters
- Frequency Control
- RF Filters
- Specialty Capacitors
- Specialty Resistors



Our actuator products make sure that a movement requirement gets effectively and accurately executed in the real world; in the cleanest or most challenging environments.

- Piezoelectric Products
- Rotary Actuators
- Thermal Products



Our Markets and Applications



Aerospace & Defense

- Communications Equipment
- Geo-Location Equipment
- Guidance Systems
- Sonar



Communications & Information Technology

- Base Stations and Small Cell Base Stations
- Cloud Computing and Storage
- Satellites
- Wireline Solutions



Industrial

- Automation Control
- Fire and Safety Equipment
- Heating, Ventilation and Air Conditioning Equipment
- Industrial Printers



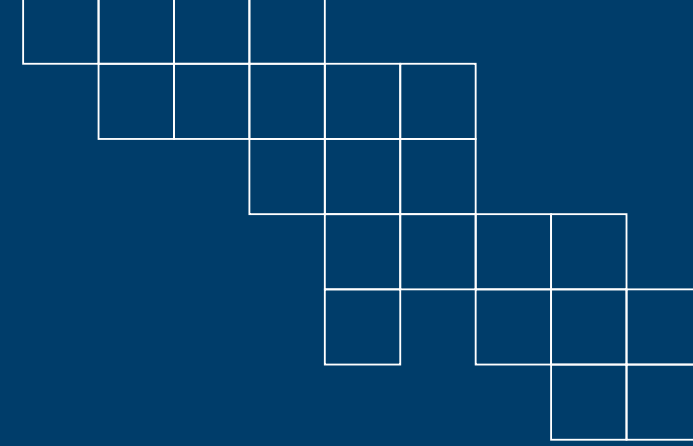
Medical

- CPAP Machines
- Infusion Pumps
- MRI Equipment
- Ultrasound / Intravenous Ultrasound Equipment



Transportation

- Chassis and Driveline Management
- Engine Control and Efficiency
- Exhaust and Aftertreatment Management
- Occupant Safety



Our People

As a global company, our 3,000 team members represent a variety of backgrounds and talents. What bring us together are our core values.

Our Values

Play to Win

We are ambitious for customers and ourselves, striving to seize opportunities to create outcomes that benefit everyone.

Responsiveness

We aim to be nimble and act fast, but never at the expense of quality, taking the time to understand our customers' needs.

Simplicity



Our goal is to reduce bureaucracy and complexity to keep things simple, being straightforward and easy to deal with.

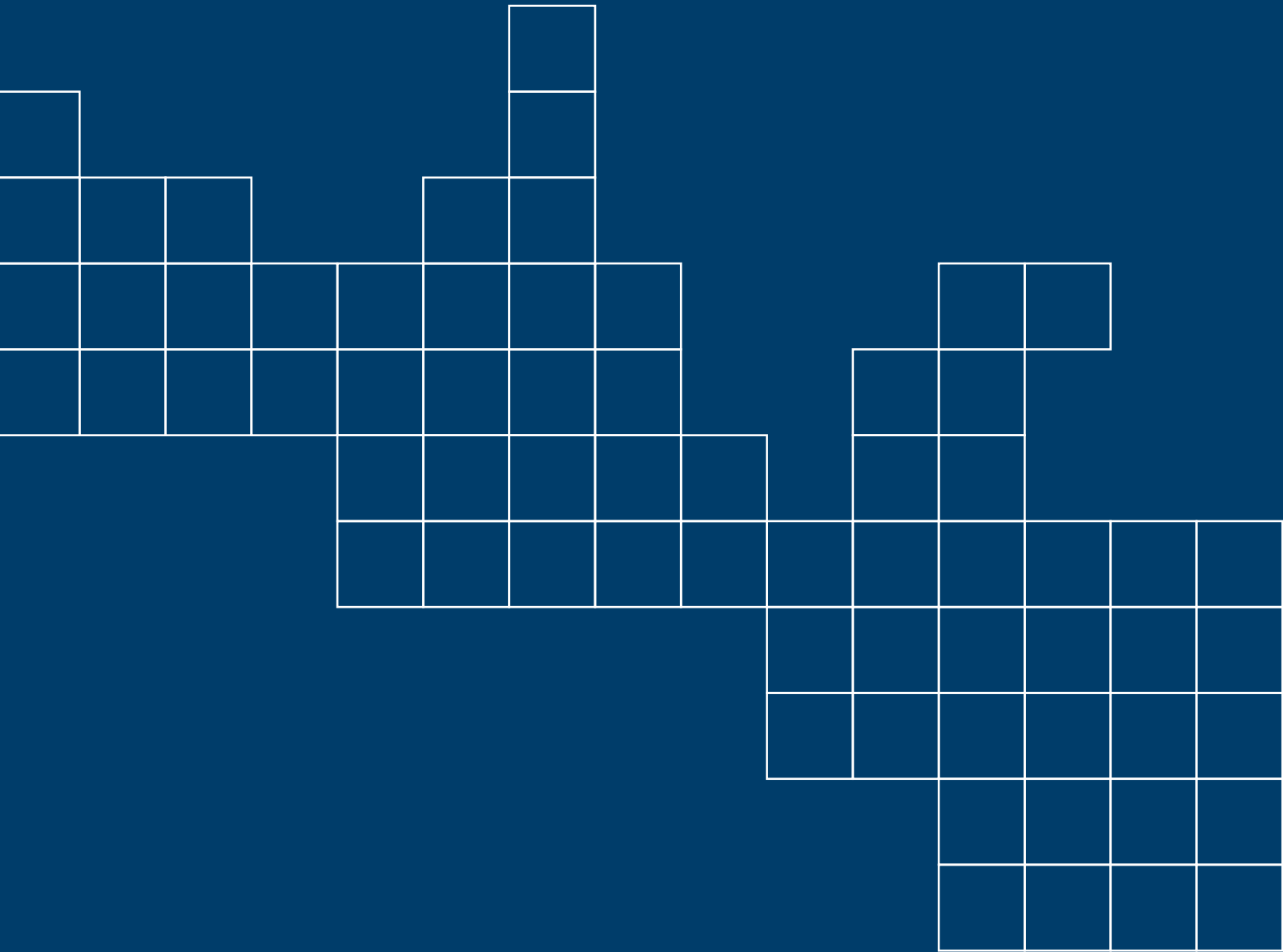
Solution Oriented

We are curious and resourceful, looking to find new and better ways of working together to deliver greater value.

Our Locations



 Sales Office
 Manufacturing Facility (12 total)



Contact Us

Press: mediarelations@ctscorp.com

Investors: investorrelations@ctscorp.com

All other inquiries, please visit us at:

www.ctscorp.com  